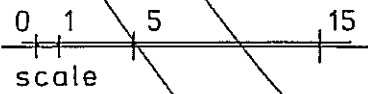
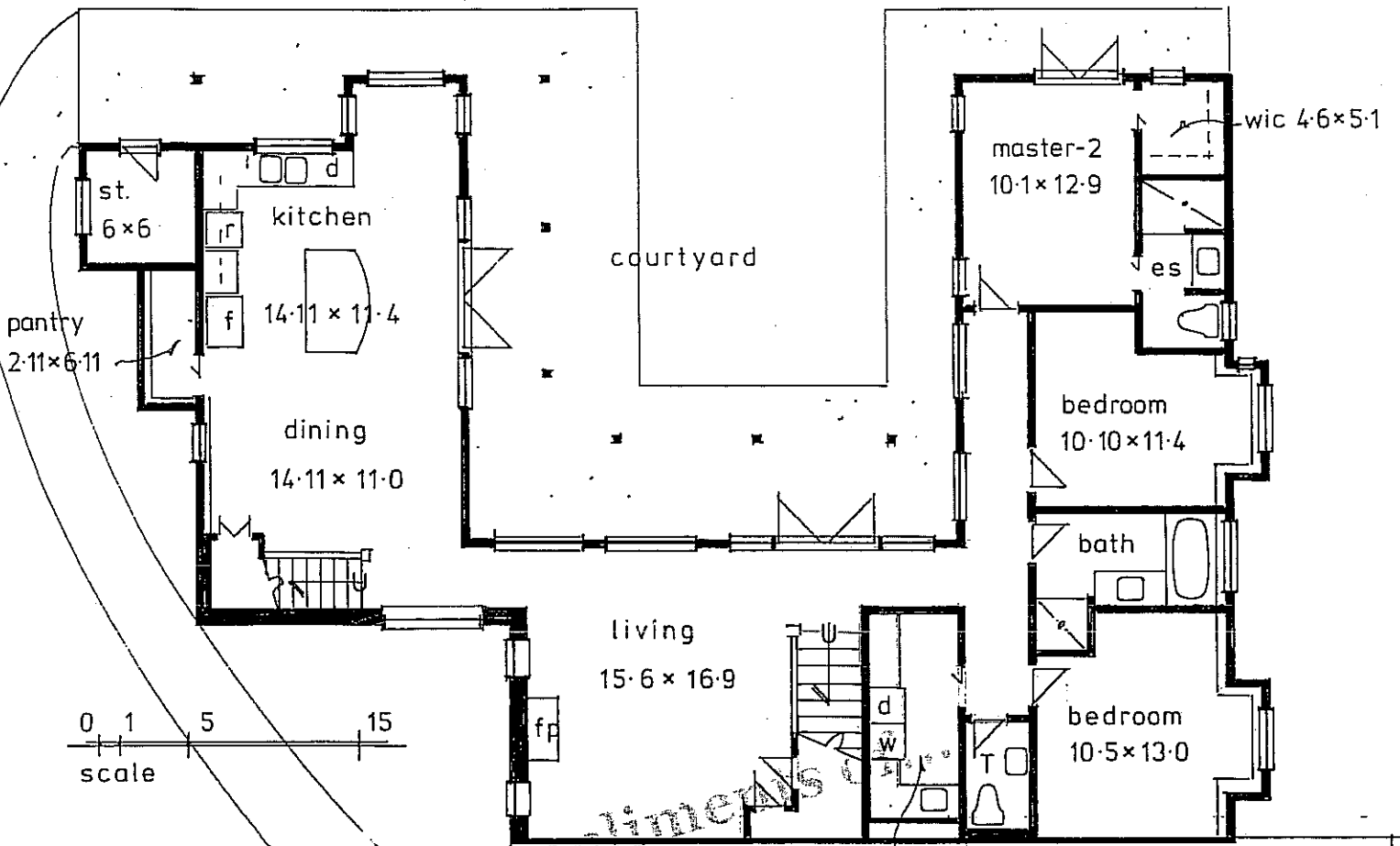


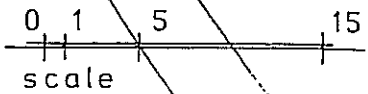
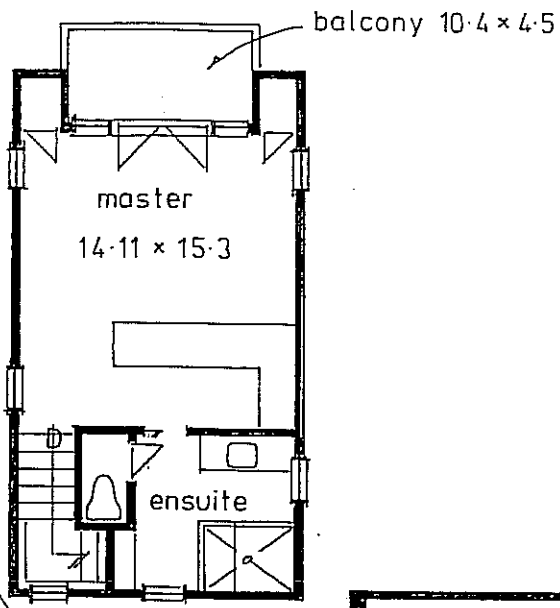
to beachfront ↗



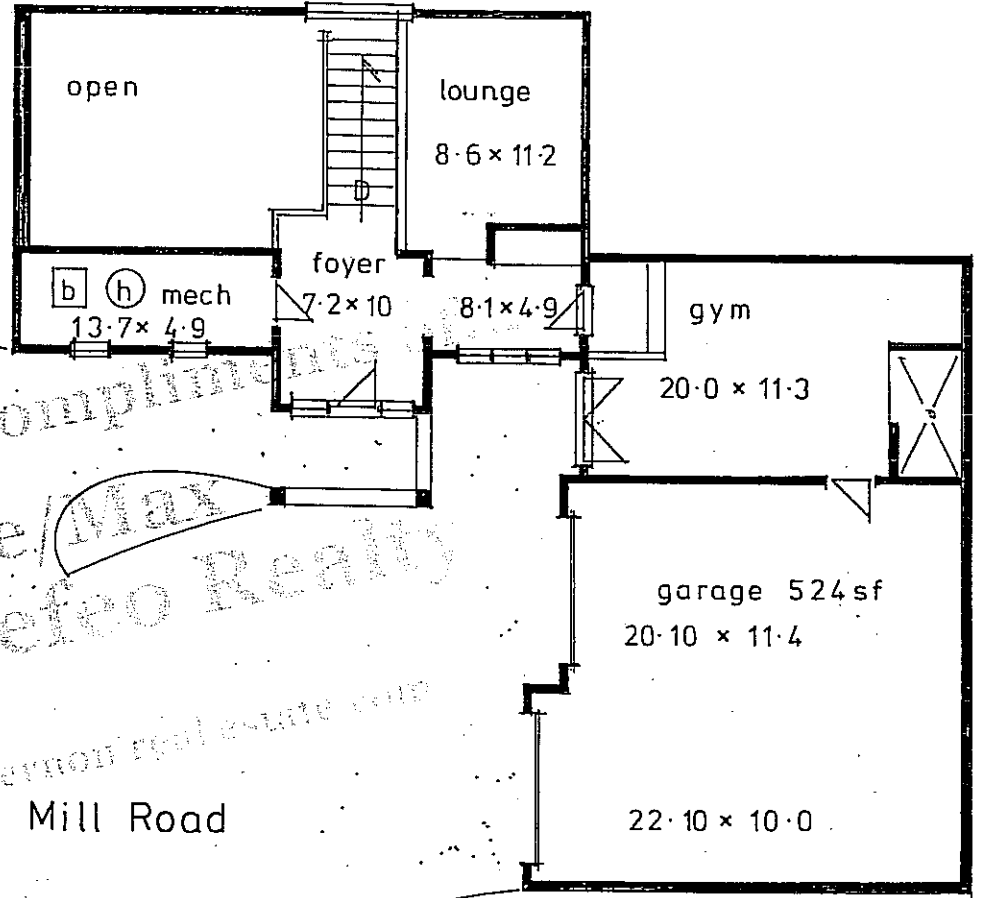
MAIN LEVEL 1760sf

Floorplans Compliments  
 Re/Max  
 Don Defeo Realty  
[www.vernonreal estate.com](http://www.vernonreal estate.com)

7336 Old Stamp Mill Road  
 Vernon, BC



UPPER ENTRY LEVEL  
966 sf ( 2726 sf )



Plans Compliments  
Re/Max  
Don Defeo Realty

www.vernonreal estate.com

7336 Old Stamp Mill Road  
Vernon, BC